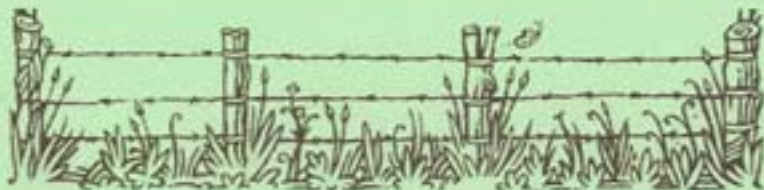


Fact Sheet 5

PESTICIDES, HERBICIDES & FERTILIZERS



A program of Des Moines County Regional Solid Waste
Commission and Great River Regional Waste Authority.



MANAGEMENT OF PESTICIDES AND HERBICIDES

- Avoid using pesticides and herbicides, substituting safer alternatives whenever possible. Our Fact Sheet 6 describes safe alternatives to hazardous products. More information may also be available from your extension service or public library.
- When a pesticide is absolutely necessary, purchase and use only the amount needed to control your pest or weed problem.
- Read labels and follow directions. Observe precautions carefully. Do not over-apply!
- Keep pesticides in original containers stored safely away from children, pets and food supplies.
- Use up your pesticides if possible. Triple-rinse the empty container. Reuse the rinse water just as you used your pesticide. Put the empty container in the trash.

DISPOSAL OF PESTICIDES AND HERBICIDES

- Unused or banned pesticides should be taken to the HazChem Center (see other side for directions).
- Banned pesticides include:
 - Toxaphene
 - Lindane
 - EDB
 - Dinoseb or Dinitro or DNBP
 - DDT
 - EPN
 - Strychnine
 - Chlordane
 - Liquid grain fumigants
(carbon tetrachloride, carbon ditetrachloride,
carbon disulfide, ethylene dichloride)



DISPOSAL OF FERTILIZER

- Use up the fertilizer whenever possible, or give it to someone else who can use it;
- If you have no options for using the fertilizer, bring it to the HazChem Center (see directions on other side) for disposal.